


Madanapalle Institute of technology & Science, Madanapalle
Department of Electrical and Electronics Engineering
COs Attainment of 2017- 18 entry batch (2020-21 Passedout batch)

Course Code and Name	% CO attainment through Direct analysis					% Course Exit Survey					Overall % CO Attainment					Overall CO attainment Level				
	CO 1	CO 2	CO 3	CO 4	CO 5	CO 1	CO 2	CO 3	CO 4	CO 5	CO 1	CO 2	CO 3	CO 4	CO 5	CO 1	CO 2	CO 3	CO 4	CO 5
14MAT103 Differential Equations & Laplace Transforms	62	63	79	75	63	88	87	85	82	84	67	68	80	76	67	1	1	3	2	1
14HUM101 Principles of Economics	75	81	70	74	73	84	83	84	83	90	77	81	73	76	76	2	3	2	2	2
14EEE102 Network Analysis	47	56	64	63	76	76	75	82	84	84	53	60	68	67	78	0	0	1	1	2
14EEE103 Electrical Machines	53	61	66	78	56	82	84	83	83	84	58	65	70	79	62	0	0	1	1	1
14EEE104 Digital Design	53	51	57	60	59	81	81	83	82	84	59	57	62	64	64	2	1	0	2	2
14EEE105 Electronic Devices	74	59	50	73	69	87	88	86	87	87	76	65	57	76	72	2	1	0	2	2
14EEE201 Electric Circuits Practical's	70	70	70	70	70	87	83	84	86	87	73	73	73	73	73	2	2	2	2	2
14EEE202 Electronics Practical's	76	76	76	76	76	84	85	87	82	85	78	78	78	77	78	2	2	2	2	2
14MAT104 Probability & Statistics	74	50	56	76	71	81	80	83	83	87	75	56	62	77	74	2	0	1	2	2
14HUM102 Principles of Management	80	86	81	75	74	86	81	80	89	86	81	85	81	78	77	3	3	3	2	2
14EEE106 Electromagnetic Theory	43	43	43	43	43	84	80	85	86	83	51	50	51	52	51	0	0	0	0	0
14EEE107 Microprocessors & Interfacing (MOOCs)	69	69	69	69	69	89	90	83	88	86	73	73	72	73	72	2	2	2	2	2
14EEE108 Control Systems	72	68	78	74	83	86	78	83	87	86	75	70	79	77	83	2	1	2	2	3
14EEE109 Analog Electronics	78	83	67	53	65	84	83	75	85	88	79	83	68	60	70	2	3	1	0	1
14EEE203 Microprocessors & Interfacing Practical's	72	72	72	72	72	84	86	86	78	85	75	75	75	74	75	2	2	2	2	2
14EEE204 Electrical Machines Practical's	59	59	59	59	59	87	89	84	90	83	64	65	64	65	63	1	1	1	1	1
14EEE110 Object Oriented Programming	59	77	65	67	64	84	82	84	86	85	64	78	69	71	68	1	2	1	2	1
14EEE111 Electrical Measurements & Instrumentation	85	63	75	82	72	83	86	89	86	82	84	67	78	83	74	3	1	2	3	2
14EEE112 Power Systems (MOOCs)	70	70	70	70	70	82	89	80	84	84	72	74	72	73	73	2	2	2	2	2
14EEE113 Power Electronics	82	70	70	62	54	85	78	78	80	81	82	71	72	66	59	3	2	2	1	0
14EEE114 Signals & Systems	54	52	58	48	44	81	87	77	80	76	59	59	62	54	51	0	0	1	0	0
14EEE205 Control Systems Practical's	74	74	74	74	74	80	79	82	80	80	75	75	75	75	75	2	2	2	2	2
14EEE206 Analog Electronics Practical's	71	71	71	71	71	86	85	83	83	85	74	74	73	73	73	2	2	2	2	2
14ENG103 Soft Skills	86	84	97	92	81	89	84	89	86	81	87	84	95	91	81	3	3	3	3	3
14EEE115 Special Electrical Machines	71	79	76	58	86	89	89	88	90	90	74	81	79	64	87	2	3	2	1	3
14EEE116 Power System Analysis and Control	54	59	86	76	87	87	87	87	86	90	61	65	86	78	87	1	1	3	2	3
14EEE117 Digital Signal Processing (MOOCs)	46	37	54	53	62	86	85	85	80	81	54	46	61	58	66	0	0	1	0	1
14EEE207 Power Electronics Practical's	69	69	69	69	69	83	89	88	88	89	72	73	72	73	73	2	2	2	2	2
14EEE208 Object Oriented Programming Practical's	100	100	100	100	100	90	89	87	88	90	98	98	97	98	98	3	3	3	3	3
14EEE118 Electrical Drives	71	64	57	64	51	91	82	83	84	82	75	68	62	68	57	2	1	1	1	0
14EEE119 Engineering Optimization	72	73	84	76	72	88	86	91	96	88	75	76	86	80	75	2	2	3	2	2
14EEE120 Electric Power Utilization and Illumination	70	82	81	70	82	91	83	84	86	83	74	82	81	74	82	2	3	3	2	3
14EEE404 Switchgear and Protection	74	94	74	72	84	92	92	90	89	90	78	94	77	75	85	2	3	2	2	3

14EEE410 HVDC & Facts	84	75	89	86	83	88	84	87	86	81	85	76	88	86	83	3	2	3	3	3
14EEE407 Power Quality	72	46	59	54	84	82	85	88	86	84	74	53	65	60	84	2	0	1	1	3
14EEE501 Mini Project	81	81	81	81	81	84	85	83	86	84	82	82	81	82	82	3	3	3	3	3
14EEE209 Digital Signal Processing Practical's	67	67	67	67	67	84	83	87	83	90	70	70	71	70	72	2	2	2	2	2
14EEE210 Power systems Practical's	83	83	83	83	83	82	91	86	92	90	83	85	83	85	84	3	3	3	3	3
14EEE412 Wind Electrical Systems	80	87	85	75	78	88	87	87	86	86	82	87	85	77	80	3	3	3	2	2
14EEE601 Technical Seminar	74	74	74	74	74	84	85	83	86	84	76	76	76	76	76	2	2	2	2	2
14EEE502 Project Work	79	79	79	79	79	89	88	88	87	89	81	81	81	80	81	3	3	3	3	3



Signature of Faculty Incharge



Signature of HOD

Head of the Department
Electrical & Electronics Engineering
Madanapalle Institute of Technology & Science
MADANAPALLE - 517 325



Signature of Principal

Principal
Madanapalle Institute of
Technology & Science
MADANAPALLE

Madanapalle Institute of technology & Science, Madanapalle
Department of Electrical and Electronics Engineering
COs, POs & PSOs Attainment of 2017 - 18 entry batch (2020-21 Passedout batch)

Course Code and Name	Overall % CO Attainmnet					PO ATTAINMNET - DIRECT															
	CO 1	CO 2	CO 3	CO 4	CO 5	PO1	PO2	PO3	PO4	PO5	PO6	PO7	PO8	PO9	PO10	PO11	PO12	PSO1	PSO2	PSO3	
14MAT103 Differential Equations & Laplace Transforms	67	68	80	76	67	72	57	61	55	53	39	56		48	48	48	58		62	66	
14HUM101 Principles of Economics	77	81	73	76	76				73		73		64	60		61	61		61	65	71
14EEE102 Network Analysis	53	60	68	67	78	65	65	61	65	60								68	67	63	
14EEE103 Electrical Machines	58	65	70	79	62	67	67	67	63			63							63	61	
14EEE104 Digital Design	59	57	62	64	64	61	61	61	61	61	63								63	61	
14EEE105 Electronic Devices	76	65	57	76	72	69	60	69	69			62		70				76	60	67	
14EEE201 Electric Circuits Practical's	73	73	73	73	73	73	73	63	68				63	73	73	65		73	65	61	
14EEE202 Electronics Practical's	78	78	78	77	78	67	67	67	73					78	78				65	61	
14MAT104 Probability & Statistics	75	56	62	77	74	61	61	64	61									65	69	77	
14HUM102 Principles of Management	81	85	81	78	77						81		63	69	69	65	64			61	
14EEE106 Electromagnetic Theory	51	50	51	52	51	51	51	51	51									51	51	48	
14EEE107 Microprocessors & Interfacing (MOOCs)	73	73	72	73	72	63	63	63	68						66	61		64	65	61	
14EEE108 Control Systems	75	70	79	77	83	77	72	64	66	72								70	61	64	
14EEE109 Analog Electronics	79	83	68	60	70	72	72	63	72	66									67	61	
14EEE203 Microprocessors & Interfacing Practical's	75	75	75	74	75	75	75	75	70	65				65	75			75	75	75	
14EEE204 Electrical Machines Practical's	64	65	64	65	63	64	64	64	64					56				64	64	56	
14EEE110 Object Oriented Programming	64	78	69	71	68	71	47	49	49	71				47	49	47			70	70	
14EEE111 Electrical Measurements & Instrumentation	84	67	78	83	74	77	62	62	77						62	63	62			80	
14EEE112 Power Systems (MOOCs)	72	74	72	73	73	73	73	73	63									73	63	72	
14EEE113 Power Electronics	82	71	72	66	59	65	61	61	65									62	66	66	
14EEE114 Signals & Systems	59	59	62	54	51	57	57	57	57									57	56	55	
14EEE205 Control Systems Practicals	75	75	75	75	75	75	75	60	70	75				60	75			75	65	60	
14EEE206 Analog Electronics Practical's	74	74	73	73	73	73	73	73	74						73				73	64	
14ENG103 Soft Skills	87	84	95	91	81								76	64	88	76	64	76	70	64	
14EEE115 Special Electrical Machines	74	81	79	64	87	77	77	62	51									75	62	66	
14EEE116 Power System Analysis and Control	61	65	86	78	87	75	75	75	61									75	75	62	
14EEE117 Digital Signal Processing (MOOCs)	54	46	61	58	66	57	53	50	45	48								50	55	51	
14EEE207 Power Electronics Practical's	72	73	72	73	73	72	72	72	63						72			63	72	63	
14EEE208 Object Oriented Programming Practical's	98	98	97	98	98	63	63	73	73	72				60	72	60			65	64	
14EEE118 Electrical Drives	75	68	62	68	57	66	66	66	68										66	70	
14EEE119 Engineering Optimization	75	76	86	80	75	78	78	68	68							68		68	78	68	
14EEE120 Electric Power Utilization and Illumination	74	82	81	74	82	79	79	63	52			66						63		63	
14EEE404 Switchgear and Protection	78	94	77	75	85	71	66	70	53									65		67	
14EEE410 HVDC & Facts	85	76	88	86	83	84	84	72	67	57								67	84	67	
14EEE407 Power Quality	74	53	65	60	84	62	66	60	58	51	51							53		84	
14EEE501 Mini Project	82	82	81	82	82	68	73	82	82	82										63	
14EEE209 Digital Signal Processing Practical's	70	70	71	70	72	71	66	61		71					61	61		65	63	63	

14EEE210 Power systems Practical's	83	85	83	85	84	73	73	67	61	84				70	67			61	84	84
14EEE412 Wind Electrical Systems	82	87	85	77	80	82	65	66	66	66		82			65	54	82	69	87	76
14EEE601 Technical Seminar	76	76	76	76	76	76	51		51	68	59	51	68	68	71	63	66	61	68	63
14EEE502 Project Work	81	81	81	80	81	67	72	81	81	81								72		67
2017 - 21 BATCH OVERALL POs & PSOs % ATTAINMNET =						70	67	65	64	67	61	63	67	63	69	61	66	66	67	66
2017 - 21 BATCH OVERALL POs & PSOs ATTAINMNET LEVEL =						1	1	1	1	1	1	1	1	1	1	1	1	1	1	1

Signature of Faculty Incharge

Signature of HoD
 Head of the Department
 Electrical & Electronics Engineering
 Madanapalle Institute of Technology & Science
 MADANAPALLE - 517 325

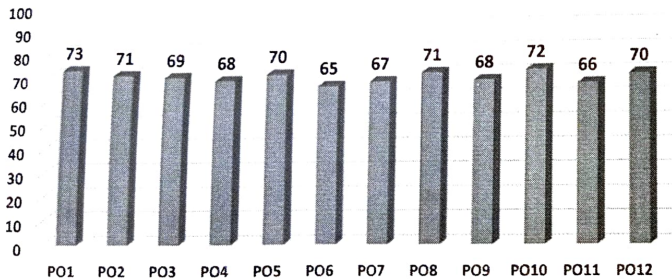
Signature of Principal
 Principal
 Madanapalle Institute of
 Technology & Science
 MADANAPALLE

Madanapalle Institute of technology & Science, Madanapalle
 Department of Electrical and Electronics Engineering
 Overall POs and PSOs attainment of EEE 2017 -21 batch

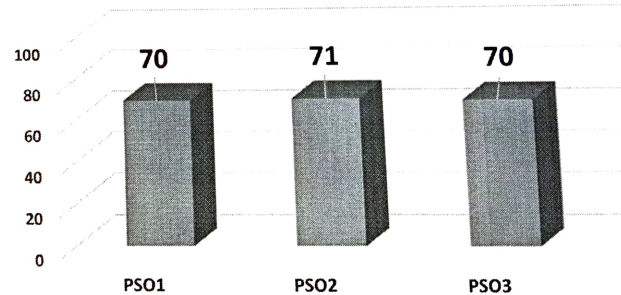
Survey	PO1	PO2	PO3	PO4	PO5	PO6	PO7	PO8	PO9	PO10	PO11	PO12	PSO1	PSO2	PSO3
Employer Survey	84	89	87	84	87	80	80	94	92	86	89	87	91	89	91
Alumni Survey	85	85	87	83	87	85	87	89	83	83	83	88	85	83	81
Graduate Survey	86	85	85	83	84	84	84	85	85	85	87	86	87	87	87
In -Direct PO Attainment	85	86	86	83	85	84	84	88	86	85	87	86	87	87	87
Direct PO Attainment	70	67	65	64	67	61	63	67	63	69	61	66	66	67	66

Overall Attainment in %	73	71	69	68	70	65	67	71	68	72	66	70	70	71	70
Overall Attainment in Level	2	2	1	1	2	1	1	2	1	2	1	2	2	2	2

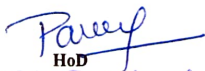
Department of EEE 2017 - 21 Batch Overall POs attainment




Department of EEE 2017 - 21 Batch Overall PSOs attainment




Faculty In-charge


HoD
Head of the Department
Electrical & Electronics Engineering
Madanapalle Institute of Technology & Science
MADANAPALLE - 517 325


Principal
Principal
Madanapalle Institute of
Technology & Science
MADANAPALLE